

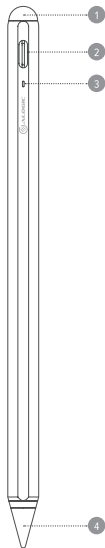


iPad™
Stylus Pen



Warning

- This device is designed for indoors use only and to be kept dry.
- Do not deliberately damage the device or expose it to damp, direct sunlight, or high temperature conditions.
- Disassembling or failing to properly use and care for your device will void the warranty on the product.
- ALOGIC bears no responsibility for damage to the device or incidental damages arising from improper use or lack of care and is not liable for repair/ replacement of the device or other damages in these circumstances.
- Do not expose the pen and battery to high temperature. Overheating the battery may cause it to explode
- If the battery leaks, do not make contact with skin or eyes. If accidental contact is made, please rinse with clean water immediately and seek proper medical treatment.
- This pen and its accessories include small parts. Please keep them away from small children.



1	EN Touch Key JP 電源ボタン
2	EN Type C Charger Port JP Type C 充電口
3	EN LED Indicator JP ランプ
4	EN Replaceable Tip JP 入替えペン先

Specifications | 仕様書

Model 原型	ALIPS
Dimensions 大きさ	48.5 x 47.3 x 27.7mm (H x D x W)
Weight 重量	19g

Quick Start Guide
取扱説明書



Designed in Australia. Manufactured in China

Package Contents | パッケージ内容

- EN 1 x iPad™ Stylus Pen EN User Manual
JP 1 x iPad™ スタイラスペン JP ユーザーマニュアル



EN

Instructions

(Refer to the images on the previous pages)

1 Turn iPad stylus On/Off

Double touch the end of the stylus to turn it on. Once the indicator light turns blue, the stylus is active. To turn off the stylus, simply touch the end of the stylus. The Stylus will also automatically connect to your device or turn itself off after 20 minutes of inactivity.

2 Charging

Use a Type-C Charging cable to charge the stylus. The indicator will be red while charging and turn off when it is fully charged.*

*Does not support wireless charging

3 Magnetic Storage

Stylus can be magnetically stored on the iPad Pro 12.9-inch (3rd Generation), iPad Pro 11-inch and iPad Air (4th Generation).

4 Replace The Pen Tip

Unscrew the tip counter-clockwise to extract, and clockwise to secure the tip.

JP

クイックガイド

(前ページの図を御参照下さい)

1 電源オン 電源オフ
電源ボタンを2回押し、LED指示灯が青く点灯したら、電源を入れました。

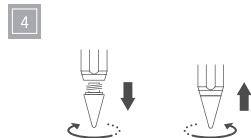
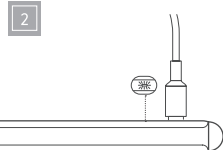
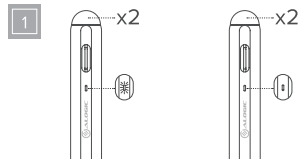
電源ボタンを2回押しして、LED指示灯が消えたら、電源を切りました。また、20分間使わない場合、自動的電源を切ります。

2 充電
TypeC充電ケーブルを使いPencilに充電します。充電中赤く点灯し、充電が完了すると消灯します。

*無線充電に適用されません。

3 吸付け
iPad pro 11インチとiPad pro 12.9インチ (第3世代以降)、iPad Air4側面に吸付けられます。

4 ペン先入替
ペン先を替える場合は、古いペン先を反時計回りに回して外し、新しいペン先を時計回りに回します。



Compatible Devices

Apple iPad 2018 & 2020:
iPad 6th Gen(9.7"),
iPad 7th Gen(10.2"),
iPad8th Gen(2020),
iPad Mini 5th Gen,
iPad Air 3rd & 4th Gen,
iPad Pro(11" & 12.9")

* All iPad Models must be updated to iOS12.2 or above

*If your iPad was paired with an Apple pencil before, please unpair it before using the Pen.

互換性

Apple iPad 2018 & 2020
iPad Air (第3世代以降)
iPad Mini (第5世代以降)
iPad (第6世代以降)
iPad pro 11インチ
iPad pro 12.9インチ

* すべてのiPad機種については、iOS 12.2 以降にアップデートする必要があります。

* お手元のiPadがApple pencilをペアしたことがあれば、予めApple pencilをアンペアしてください。