

## Installation

### Step 1

Connect your air vent mount adapter or WINDSCREEN mount to the wireless charging base by screwing the base into the swivel ball and turning the twist lock clockwise to fasten.

### Step 2 - Air Vent Lock

Flip the air vent lock switch to the upright position to open up the clip and place it on the suitable air vent. Adjust the charger to an optimal viewing position. When you have chosen your position, flip the switch to either to the side 1 or 2 to close the clips onto the air vent blades. The charger is now secured.

### Step 3 - WINDSCREEN mount

Flip the WINDSCREEN mount lock switch to the upright position to open up the suction cap and place it on a suitable windscreen position. Adjust the charger to an optimal viewing position. When you have chosen your position, flip the switch down to tighten the suction on the windscreen. The charger is now secured.

### Step 4

Mount the phone by placing it on the rubberized charging surface and gently pushing the phone to activate the trigger button to close the side arms. To dismount the phone simply press the release bars to open the side arms and remove the phone with ease.

### Step 5

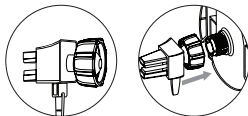
Use the Micro-USB charging cable included with your charger to connect the Wireless Charging Base and your vehicle's Car Charger\*. For best performance a minimum of 10W is required from the car charger.

\*Car Charger not included. Alogic Cannot guarantee the charging efficiency of your car charger in conjunction with the wireless charging car mount.

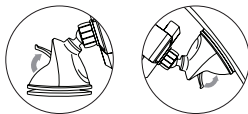
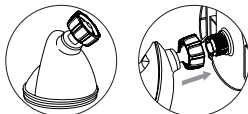
## Note

- Do not deliberately damage this product and put it in damp, direct sunlight or high temperature environment.
- If improper use, demolition or operation not according to the instructions result in any damage of your device or product, our company will not be liable for any compensation or maintenance responsibility.

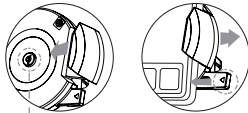
### Air vent mount adapter



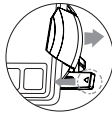
### WINDSCREEN mount



### Lock Mechanism



Place phone on trigger button to close



Push side arms to release

Welcome to ALOGIC  
Willkommen bei ALOGIC  
Benvenuti a ALOGIC  
Bienvenue à ALOGIC  
Bienvenido a ALOGIC  
ALOGICへようこそ  
ALOGIC 에 오신것을 환영합니다

Quick Start Guide

# Quick Start Guide



## Introduction

ALOGIC Wireless Charging Car Mount with Qi Technology is an easy to use car mount with wireless charging for Qi enabled smartphones. Designed for easy one-handed operation, the wireless charger lets you keep your eyes on the road, your phone charged and the GPS information available at a glance.

## Specifications

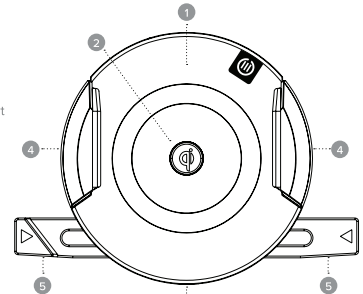
Model	QC10RCMBK	
Input	Micro USB	
Output	Wireless	
Power	Input: 5V/2A	Wireless Output: 5W/7.5W/10W
Dimensions (mm)	104 x 76 x 50	
Compatibility	All Qi enabled devices	
Maximum Output Power	10W (Max)	

## Features

- Designed for easy one-handed operation
- Let's you keep your eyes on the road, your phone charged and the GPS information available at a glance
- Easy-mount mechanism lets you mount or dismount the phone in seconds by a single-handed operation
- Simple to install with the option for being set up at any desirable angle or orientation
- Soft rubber padding on the charging surface provides enhanced protection to your phone when mounted
- Equipped with Strong, Elastic & Slip-proof Clips, the charger can be securely mounted on the car air vent
- Compatible with most of the current smartphones of varying sizes
- Qi certified to meet and exceed all safety and performance requirements
- Warranty: 2 Year

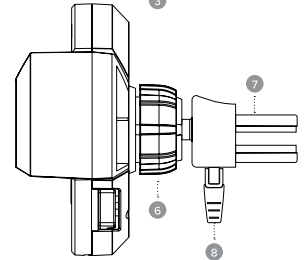
## Physical Layout

- 1 Wireless Charging Pad
- 2 Trigger Button
- 3 Micro USB Power Input Port
- 4 Phone Holder Side Arms
- 5 Release Bars
- 6 Swivel Fastener
- 7 Air Vent Clips
- 8 Air Vent Clamp Switch



## Package Contents

- Wireless Charging Car Mount x 1
- Air Vent Mount Adapter x 1
- Windscreen Mount x 1
- 1m Micro USB cable x 1
- User Manual x 1



## FCC Warning

This device complies with part 18 of the FCC Rules. Operation is subject to the following two conditions:

- (1) This device may not cause harmful interference, and
- (2) this device must accept any interference received, including interference that may cause undesired operation.