

Installation

1) Open the magnetic cover at the bottom of the charging station by gently pulling it off.

2) Insert the USB connector of the Apple Watch Charging cable to the USB port. Route the cable across the two cable management wings as shown in the image.

3) Bring out the Apple Watch magnetic connector on the top via the cable routing cut out and place the magnetic connector in the slot.

4) Once the connector is in place, put the self-aligning magnetic cover back on the bottom.

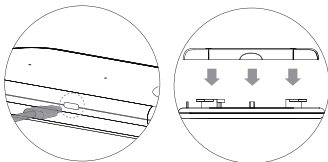
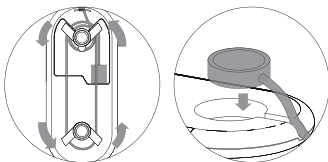
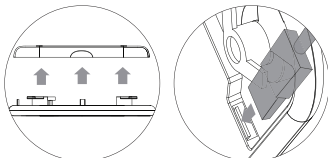
5) Connect the USB-C end of the USB-C to USB-A cable included in the box to the USB-C input port of the charging station.

6) The charging station should be powered by a USB charger. Connect the USB-A end of the cable to a USB charger. For the best performance, it is ideal to use a 18W quick charge enabled charger. A minimum of 10W is required for charging station to work. Please ensure your USB charger can provide a minimum of 10W power.

7) When the device has power, the main LED will glow Blue to indicate that.

8) When the device is ready for wireless charging a Red LED will glow at the centre of the wireless charging surface. Centre your phone on the Red LED.

9) Place the Apple Watch on the charging connector, which was placed in position earlier. Once placed and charging, the Apple Watch will display the charging status on the screen.



Welcome to ALOGIC
Willkommen bei ALOGIC
Benvenuti a ALOGIC
Bienvenue à ALOGIC
Bienvenido a ALOGIC
ALOGICへようこそ
ALOGIC 에 오신것을 환영합니다

Quick Start Guide

Quick Start Guide



Introduction

The Wireless Duet Charging Station lets you charge an iPhone and an Apple Watch wirelessly at the same time.

The wireless charging station is optimised with a 7.5W power output, which is design specifically for the latest iPhone and Apple Watch. There is an Apple Watch cable slot for the original Apple charging cable to sit perfectly next to the iPhone.

It also has an USB port to connect your existing Apple Watch charging cable and a socket on the top to perfectly place the magnetic charging connector.

Specifications

Model	QC10AWNQH
Input	USB-C
Output	Qi Wireless Charging, Apple Watch USB-A Output
Power	Wireless Charging (For iPhone): 5W/7.5W USB-A Output (For Apple Watch Charging Cable): 5W
Dimensions	156.5 x 66.6 x 22 mm
Compatibility	For iPhone and Apple Watch

Features

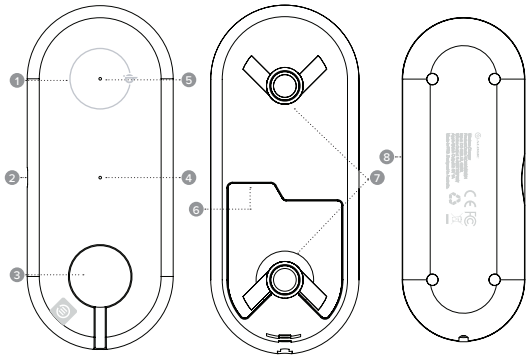
- Just ONE cable input to charge both iPhone and Apple Watch
- Charge Apple Watch & iPhone Wirelessly at the same time
- Optimised to wireless charge your iPhone at 7.5W
- Compatible socket for Apple Watch magnetic charging cable
- USB-C Input for universal compatibility with most of the USB Chargers
- Perfect for the bedside/study/office table

Package Contents

- Wireless Duet Charger x 1
- USB-C to USB-A Cable x 1
- User Manual x 1

Physical Layout

- 1 Wireless Charging Pad
- 2 USB-C Power Input
- 3 Apple Watch Charging Cable Slot
- 4 Power On LED
- 5 Wireless Charger LED
- 6 USB-A Power Output for Apple Watch Charging Cable
- 7 Cable Management Routers
- 8 Magnetic Base Cover



Note

- Do not deliberately damage this product and put it in damp, direct sunlight or high temperature environment.
- If improper use, demolition or operation not according to the instructions result in any damage to your device or product, our company will not be liable for any compensation or maintenance responsibility.